

Will I Obtain Certification From A Return to Education Course?

All courses offered by the BTEI provide certification. However, it is not compulsory to avail of it.

What will I gain from participating on the Return to Education Courses

Participation in part-time programmes can provide opportunities to:

- ⇒ Continue your learning
- ⇒ Obtain national certification
- ⇒ Develop new skills
- ⇒ Pursue new employment opportunities

Duration:

Level 3 Award 3 mornings a week

Level 4 Award 4 mornings a week



QAI AWARD



etbi
Education and Training
Boards Ireland
Boird Oideachais agus
Oiliúna Éireann

**For Further Information Contact:
Kathleen Grimes**

at

Telephone: 0504-31007 Fax: 0504-31544

www.tcfe.ie

Email info@tcfe.ie

**“Investing in your future”
THIS PROJECT IS CO-FUNDED BY
THE IRISH GOVERNMENT AND THE
EUROPEAN UNION UNDER THE
EUROPEAN SOCIAL FUND**



Ireland's EU Structural and Investment
Funds Programmes 2014 - 2020.

Co-funded by the Irish Government
and the European Union.



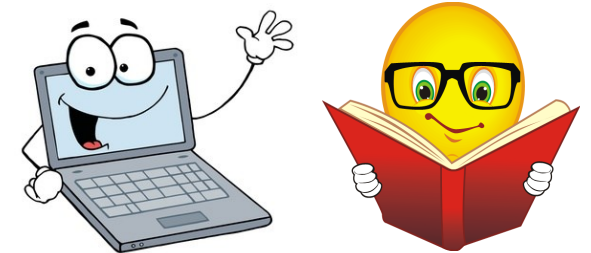
EUROPEAN UNION

Investing in your future
European Social Fund



TEMPLEMORE

***RETURN
TO
EDUCATION***
BTEI Part -Time Courses



September 2017 to May 2018

What is the Back to Education Initiative?

It provides part-time Further Education programs for young people and adults. It affords participants the opportunity to combine a return to learning with family, work and other responsibilities.

Who can take part on Return to Education courses?

Anyone can participate on a BTEI program, but priority is given to those with less than a Leaving Certificate standard of education

Is there a cost to participate on the Return to Education courses?

There are NO FEES payable by persons entitled to, or dependants of persons entitled to:

- ⇒ A medical card,
- ⇒ Social Welfare payment.

All waged and/or unwaged participants with less than Leaving Certificate standard of education are eligible to take part in BTEI funded programmes free of charge.

Is there Payment for Attending A Return to Education Course?

No. For people in receipt of social welfare payments there is continued entitlement to benefit. It is best to inform your local social welfare office if returning to education.

Main Areas of Study:

QQI Level 3

Learning For Everyday Life Award

Communications Skills:

This module aims to equip the learner with a range of communications skills for use in social, personal and work life and to encourage the Learner to have the confidence to use these skills in their daily lives.

Woodwork

This module aims to provide the learner with the opportunity to make artefacts from wood and in doing so to use many different wood-working tools and processes

Personal Effectiveness

This module aims to equip the learner with the skills to use personal resources in order to meet the personal and social demands of their lives.

Word Processing

This module aims to provide the learner with the tools necessary to use word processing to generate documents of interest to the Learner

Internet/Email Skills

This module aims to provide the learner with the necessary knowledge and tools to be able to go on-line to find information and use an email account confidently

Maths

This module aims to provide the learner with the confidence to use mathematics to solve real life mathematical problems that can be experienced in their personal life, educational life and work life

QQI Level 4. General Learning Award Communications Skills

The purpose of this award is to equip the learner with the relevant knowledge, skill and competence to communicate in routine everyday tasks, and in work-related tasks

Maths

The purpose of this module is to equip the learner with the relevant knowledge, skill and competence to apply a range of mathematical skills and tools to a variety of contexts,

Personal Effectiveness

The purpose of this module is to equip the learner with the knowledge, skill and competence to use a range of personal and learning skills in a variety of personal, community and career contexts,

Word Processing

This module provides the learner with the knowledge, skills and competence to use word processing applications to supervised employment standard.

Computer Applications

This module has been designed to provide learners with an understanding of and practical experience in the use of Database, Spreadsheets and Computer Graphics

Vegetable Growing

The purpose of this module to provide the learner with the relevant knowledge, skill and competence to plant, grow and maintain a range of vegetables

Food and Nutrition

This module will provide the learner with the knowledge to follow a healthy and balanced diet and the special dietary requirements of certain groups of people

Work Experience

The module can provide students with an opportunity to enter into an employment area of your choice by allowing you to gain relevant experience, meet people working in that area and getting an idea of what the job is like before entering into it full time